



Wesley Methodist Church Weeke

Wesley Somborne Link

One Church on two sites

23rd January 2026



King's Somborne Methodist Church

ARE YOU A TEAM PLAYER?

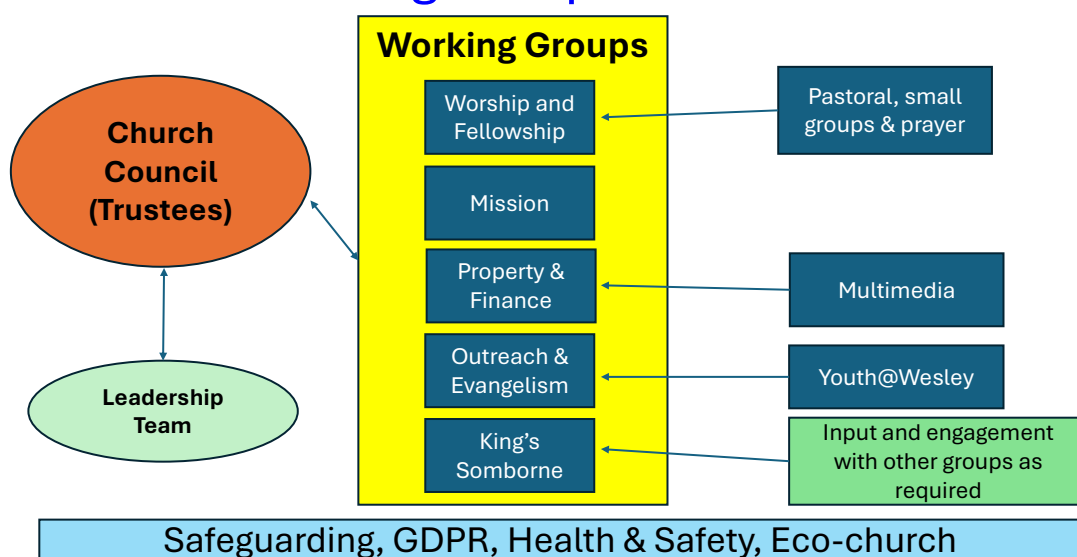
Many of us are now retired from the workplace, but if you look at many of the job vacancies advertised now, they ask if you are a good 'team player'. Companies often run selection sessions where they give applicants a set task, which cannot be achieved if they work by themselves. Teamwork and an individual's contribution to a team can be assessed.

In a Christian context we are part of a team, the church. If we look back at the Bible, we see that Jesus did not just do things on his own in His ministry. He selected a team to help Him. With the exception of Judas, they carried forward the Gospel message as a team. Later, Paul did not work on his own to spread the good news – he had helpers in his team, notably Barnabas and John Mark, though there were sometimes disagreements!

I believe that Jesus would want our church to work as a team, so that they can encourage others to share in the Gospel message. In our own lives, we need to recognise the whole benefit of working together as a team. If you are not already in one of Wesley's working groups, perhaps you would consider joining one. It is by working together, that we can seek to encourage all to follow the path that Jesus has set out for us. Jan.

P.S. Paul would love to hear from you if you would be happy to join a working group! (See structure below).

W & KS Working Group Structure



On Sunday 25th January at 10.30am, the ReFresh Service will be led by Mrs Pat Fry and Mr La Follette
On Sunday 1st February at 10.30am the Service will be led by Mr Nick Langham and the Mission Team
These services will be live streamed, the link to which can be found via the Wesley Website at:

www.wesleychurch.org.uk

Dates for Your Diary:

22nd January 2026: Mini-Marvels (9.00—11.00am)

22nd January: Together Thursday 2.30—4.30pm

24th January: Café Wesley (10.00—12 noon) in aid of Youth@Wesley and Lego Church (10.00-11.30am)

25th January: ReFresh Service led by Mrs Pat Fry and Mr Andrew La Follette at Wesley 10.30am

25th January: Covenant Service led by Revd Peter Rayson at King's Somborne 10.30am

29th January: Mini-Marvels (9.00—11.00am)

1st February: Service led by Mr Nick Langham and the Worship Leaders at Wesley 10.30am

1st February: Service led by Revd Robert Kitching at King's Somborne 10.30am

3rd February: Circuit Children, Youth and Family Leaders Zoom 7.00—8.00pm

5th February: Mini-Marvels (9.00—11.00am)

6th February: Friday Fun Club (5.00-6.30pm)

6th February: Feel Good Friday (7.00-9.00pm)

8th February: Service led by Mr Mike Bowstead at Wesley 10.30am

8th February: Service led by Revd Rachael Hawkins at King's Somborne 10.30am

12th February: Mini-Marvels (9.00—11.00am)

12th February: Together Thursday 2.30—4.30pm

15th February: Service of Holy Communion led by Revd Peter Rayson at Wesley 10.30am

15th February: Messy Church at King's Somborne (3.00-5.00pm)

Wednesday 18th February: Wesley Wild World Holiday Club at Wesley 9.00am—4.00pm

20th February: Feel Good Friday (7.00-9.00pm)

22nd February: ReRefresh Service led by Mrs Elizabeth Britton at Wesley 10.30am

22nd February: Service of Holy Communion led by Mr Peter Castle at King's Somborne 10.30am

26th February: Mini-Marvels (9.00—11.00am)

26th February: Together Thursday 2.30—4.30pm



5 ways to support wildlife in winter

www.eco-able.co.uk



Put out food for the birds every day, including seeds and fruits



Keep ponds and water sources free from ice (pop a ball into the water, this helps to prevent it completely freezing)



Leave piles of leaves or make an area suitable for wildlife to hibernate in



Put out cat food and fresh water for hedgehogs



Less is more - leave your outdoor space alone as much as you can over the winter, this helps insects who need shelter



The next edition of the WSL will be on Friday 6th February, we will need any items for inclusion to be sent to Paul and Brenda, by Wednesday 4th February, 2026.

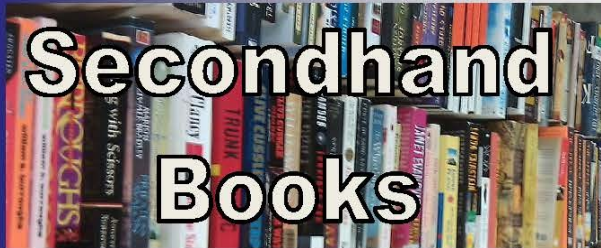
Email: brenda.yarrien@btinternet.com or by phone on 01794389153.



Cards



**Drop in
for a
chat**



**Secondhand
Books**



**Secondhand
Jigsaws**

This Saturday, 24th January 2026

**every month
10:00 - 12:00**

**create a
scene
challenge**



**LEGO
CHURCH**



Bacon roll





WESLEY WILD WORLD HOLIDAY CLUB

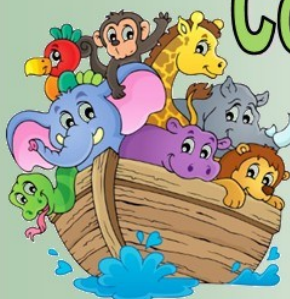
9am to 4pm

Wednesday 18th February
School year 1 to 6

Cost: £5 (bring a packed lunch)

For more details and to book email Sam:

Sambarnesyouthworker@gmail.com





21a Penton Place
Milland Road
Winchester
SO23 0PZ

The Revd Peter G Rayson BSc MA
Superintendent Minister
Wesley Methodist Church,
Weeke,
Winchester,
SO22 6EG

revpeterayson@gmail.com, office@wesleychurch.org.uk

9th January 2026

Dear Revd Rayson,

Thank you so much to you and your congregation at Wesley Methodist Church, for their recent £215 donation to the Winchester Food & Basics Bank recently. This is a very timely donation and we are very grateful.

In 2025 we served 8471 people in the Winchester and surrounding areas. As food prices are on the up, food donations from our supermarket collection points are not meeting the demand, so we are having to spend over £1000 each week in topping up our supply.

Our School Holiday Lunches scheme has been much in demand in recent years. In 2025 we gave out holiday lunches to 1238 children, that was over 11,802 lunches.

In April 2025 we opened a new Hub for our clients at the Sainsbury' Community Centre. It has a good bus connection, we hope it would be easier for those without transport to reach us.

We are providing a much needed service and it is only possible because of the support that we get from local businesses, volunteers, schools, donors and churches.

We welcome visitors to our main site at Milland Road or at our warehouse in Winnall. Please let me know if anyone would like to visit. Thank you very much once again.

Regards

A handwritten signature in black ink that reads "Beauman Chong".

Beauman Chong tel: 01962 866488
Trustee – Winchester Food & Basics Bank
Governor – Hampshire Hospitals NHS Foundation Trust
Churchwarden – St Lawrence with St Swithun,



January 2026 - new address: 120 Ratcliffe Drive, Stoke Gifford, Bristol BS34 8UB

Dear Supporter,

Happy New Year. Do please make a note of our new address. Just before Christmas we sent small financial gifts to a few of our South Sudanese friends. By then our fridge was fully stocked and it shook us when we began to receive some thank you messages like this one: "This money has really saved my family. Food has become scarce at home. We had little grain left. We have ground nuts but not much flour. Immediately after receiving the money this afternoon, my wife and daughter were able to procure maize, sugar and oil for us." And this one: "I am in tears of joy for the gift. I had some money but I used it for transport to attend the funeral of my brother's son aged 23 who died after a short illness. I came back on Christmas Eve. Your gift has come at the right time. Pray for us. We are expecting a new baby by the grace of God. Many many thanks for the gift. We will have food in the house." And one more, this time from a Bishop: "I received a money message on my phone and I was thinking who had blessed me with money. I am so happy for this Christmas support. My family will enjoy this Christmas because I was stuck not knowing what to do. But with this blessing, I have become the happiest." These comments are a powerful reminder of how hard life still is for those living in South Sudan where the economy is in a dire state and where life is fragile. Early death from preventable diseases is all too common. Government employees have not been paid for many months and some NGO workers at the Martha clinic have worked unpaid for the last five months. We can feel powerless to do very much in such a bad situation but this should not mean we can do nothing. What may be a small sum to us could make a very big difference to a family that has nothing left in their larder.

If you think you are too small to make a difference, you haven't spent the night with a mosquito.

-African proverb

January is a month when there is no school (a bit like our long summer holidays) and so it is the ideal month for the church to run its youth discipleship programmes. This year, we are sponsoring this training in three Dioceses, Yei, Panyana and Morobo. Having moved house recently, we've been clearing out a lot of paper records and as we write this letter, we have in front of us the report on the Panyana Youth Camp of 2011. The leader of that camp is now a Bishop and we think that half the team of young people from



Christ Church, Winchester who joined us are now ordained. That was 15 years' ago and, apart from COVID, the camps have run annually ever since, in some different formats but generally covering the same material – How to be a real disciple of Jesus. We pray that this year's discipleship training will have a life changing impact of all who attend and the leaders too. The photo was taken last year at the Morobo camp.



Teacher training

Our sponsored students at the Yei Teacher Training College are all doing well and entering their last year of study before graduating in December. This year we are giving scholarships to 8 students (left), who were all selected by their Bishop, and to two students who have been awarded scholarships by the Harriet Memorial Fund. This fund was set up to help female students who have

ability but who would not be able to afford to train as a nurse or teacher without financial support.

Martha Clinic

The team at Martha are busy exploring a couple of new options for running the clinic. Since its start in 2007, the clinic has imported most of its medicines from Uganda, using a reliable not-for-profit wholesaler that we set up an account with. The Brickworks tops up the account via a bank transfer when needed and the pharmacist at the Martha Clinic sends the next order to Poppy who reviews it and then places the order. We arrange for the medicines to be collected and driven to the border where the medicines are handed over to the driver from the Martha Clinic and are driven to Yei. The logistics and communication can be frustrating but recently the Uganda Revenue Authority made the border crossing and handover very complicated and twice our team has been fined for minor infringements in the documentation. Consequently, we are now looking to find a reliable supplier of wholesale medicines in Juba, which will make the supply somewhat easier.

Meanwhile the Diocese is in discussion with the Christian Blind Mission (CBM) about CBM taking over responsibility for the operation of the Martha Eye Clinic in April. The eye clinic has been funded for the last two years by our church through The Brickworks but this will come to an end in March. The early discussions with CBM have been fruitful and we are hopeful that a new partnership will come to pass, as it seems like a very good fit for the Eye Clinic to be linked to an NGO that is already offering eye services in other parts of South Sudan.

We have previously mentioned our concern that the reduction of US Aid will have a big impact on the health service in South Sudan and on the Martha Clinic in particular. The loss of grant funding is serious and many health staff have not been paid for 5 months. The good news is that another organisation may step in to fund the Martha Clinical Officer and to give support to its children's ward and maternal and child health programmes. This is not yet certain but we are hoping and praying that this help will be given.

Finally, we are very thankful that Poppy is fully recovered and we are able to make plans for a visit to Yei this year, possibly in June. We are also very grateful that our house move went smoothly. On behalf of the Trustees and those we work with in South Sudan, thank you very much for your support.

John and Poppy Spens, now at

The Brickworks, 120 Ratcliffe Drive, Stoke Gifford, Bristol, BS34 8UB. Tel: 07900 070793.

WINCHESTER PRAYER

MONDAY 2 FEBRUARY 8pm
Christ Church (Christchurch Rd)

THE SMOKE OF THE INCENSE,
TOGETHER WITH THE PRAYERS
OF GOD'S PEOPLE, WENT UP
BEFORE GOD (REV 8:4)



**CHURCHES
TOGETHER
WINCHESTER**

Need to talk?

WE'RE HERE TO LISTEN

**We are here to support with
any concerns, anxieties, or
difficulties you're facing.**

We're here on the 1st & 3rd Tuesday
of every month • 12:30–1:30pm



Find us at:
St Lawrence's Church
The Square, Winchester, SO23 9EX

take time
together

An online meditation
session for everyone.

Discover the power of Christian mindfulness meditation.

Taketime meditations use our imaginations to provide a calm,
comfortable space in which to meet God.

All are welcome.

No faith background or prior knowledge is needed to attend.

Where:

Zoom - please email
for the link and access details.

Contact:

Alison Dolphin
chaplain@winccc.org.uk



We meet on the 4th Wednesday of every month
from 7:30pm, for about 30-45 minutes.



You're warmly invited to our

Open Day!

Come and celebrate our two-
year anniversary milestone
and discover the heart of
Renew Wellbeing Café.



Renew Wellbeing

Drop in to:

- ✓ Meet our team & volunteers
- ✓ Find out how we support wellbeing & mental health
- ✓ Enjoy light refreshments

Monday 2 February

between 2PM & 3:30 PM
wellbeingcafeandhub@gmail.com

Salvation Army Hall

Parchment Street
Winchester, SO23 8AZ



Everyone is welcome - including community members, organisations, partners, and local leaders.



Churches Together in Winchester
Working Together for the City



UKRAINIAN

Valentine's Concert

6PM • 15 FEBRUARY 2026

UNITED CHURCH • JEWRY STREET • WINCHESTER



You are warmly invited to a Ukrainian Valentine's Concert, featuring a beautiful blend of music and dance performed by Ukrainian artists:

Kateryna Bolkunevych Soprano • **Liliya Solomonova** Piano
Volodymyr Vasylenko Accordion • **Ava Solomonova** Vocal
and the **Chervona Ruta Dance Group**

ADULT £10 • CONCESSIONS £5

Tickets available on TicketSource and on-the-door

**Soprano
& piano** & friends



TicketSource Link:



Caring for our Planet



Morning: Seminars
on Caring for our planet

Why? Ruth Valerio

*Programmes, Partnerships and
Advocacy Director, (Embrace
the Middle East)*

How? Steve Collins

*Net Zero Carbon (NZC)
team, The Church of England*

Afternoon:
Panel discussion

A free community event

with much to explore

All zones are accessible

View movies in the **Science Dome**

Creative fun **Craft Zone for children**

Poems, photos, posters **Exhibition Space**

Expand your thought? **Seminar Room**

Reflect in the **Quiet Room**

Drinks and snacks **Refreshment zone**

Local action groups **Market zone**

Something for everyone

When: **18 April 2026**

Where: Chandler's Ford Methodist
Church, SO53 2GJ

Time: 10 am to 4 pm

Updates will be published on:

<http://www.wermethodistcircuit.org.uk>



St Andrews 2.0 Launch event

Saturday 31st January 10am-2pm



Drop in and find out more about
our exciting new project

Bacon butties, soup and roll, tea, coffee
and cake available

An opportunity to sponsor a roof tile

Gifts and pledges welcome

St Andrews Methodist Church, Blenheim Road, Eastleigh SO505SD
Website: www.standrewsmethodisteastleigh.com

Talks at St Lawrence Church Coffee Mornings

by Professor Jerry LaSala

**at 11am, after the 10am coffee
mornings on first Fridays of the month**



2nd January: "An Astronomer Looks at the Christmas Star"

6th February: "Mysteries of the Calendar"

6th March: "The Antikythera Mechanism: A 2000-
Year- Old Astronomical Computer"

There will be a retiring collection for the Winchester Basics Bank.

**Dr Jerry LaSala is Emeritus Professor of Physics
at the University of Southern Maine in the United States.**

Ukrainian


UNIVERSITY OF
WINCHESTER

Supported by
 Winchester
City Council

 WUCA
Winchester Ukrainian
Cultural Association

 Ukrainian
Artists & Art
Non-profit
cultural platform



19.01.2026
13.02.2026

Artists

This exhibition brings together works by Ukrainian artists created across a range of artistic genres and practices. Despite the diversity of visual languages, all are united by a shared reflection on Ukraine as a cultural, historical, and personal space. The exhibition features artists living and working in the United Kingdom, Canada, and Ukraine. On view from 19 January to 13 February. Free admission.

EXHIBITION OPENING

19 JANUARY 2026 | 16:00–17:00

**THE UNIVERSITY OF
WINCHESTER**

WEST DOWNS CAMPUS,
ROMSEY ROAD, WINCHESTER

"Dear God, fill our hearts with encouragement as we work together. Help us to uplift one another and to find joy in our shared goals. May our efforts be blessed by Your grace. Amen."



www.prayersfor.com



"Lord, we pray for strength in our unity. Let us support each other through challenges and celebrate together in successes. May our collective efforts bring glory to Your name. Amen."



www.prayersfor.com

TEAMWORK

W Q O S I E T Y V U W N Z Q J H H Z G P D K S Q
E M Y W N A D R Z F B V P A A Z W R M I H F J D
M L T Y L A H X M R D K U S C W E R A H S D G V
L P R E O B I W W Y S V M O F C X J F V Q L A T
M P N I V Q J S F V Y X J H H N Y A S Z D X B D
Q T F R C E K M E N H X M R P J U L J M F X N L
S S H M P V M L P H H Z I U R A J A B I A F F I
J T K L F P I I F G P S S R N D N D K L P R P Q
O X S H I C A W O Y T E T X I J W Y Z E D X V B
E J M N D D C D W M U H W O R K I F N P K C C Q
K P N Q X S U P P O R T N F P F K J P L A A P G
I M X E M C I O A O P B Z C Y J A M G E O Z C F
M H V I E O C R E H T E G O T F N X J H Y T P S
N I O W B R U I H M K G O C N U J Y D O B B O B
G F L N K I X O M Z I P W E E S T V S T F E Z G
L E Q A D N Z K I H G F D Q L S E U P C M J T Q
N K O B G T Q C I H G E L J U R T J X P M B V G
D X L W Y H N K Z Y J L A F F V U B A C I F Z Z
R X P H N I Y T W B H Q M A U V P F C B O Q E A
Z W E A B A K X M A E T H C R U H C L M C L N B
P Q V J N N E E V N M F J A R Y B E U U G O C T
Q I N U F S P J C J M U N B M U Y D S V Q V R P
T Q J Z T D F P I O V J Q W L E Y Z U Q X E N T
R G K S O O Y B K B X L S C M I X W K X M P Z C

Corinthians

Ephesians

together

support

talents

church

Christ

share

Bible

team

work

give

help

love

body

God